

PROLINE DURA COLORS

COLOR HARDENER // ANTIQUE RELEASE // EZ-TIQUE

www.prolinestamps.com



www.grohconcrete.com

Gary
GROH
Construction LLC
(507) 437-2524

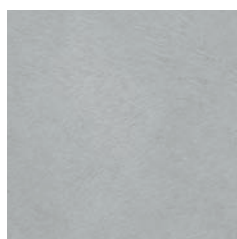


proline
decorative concrete
systems

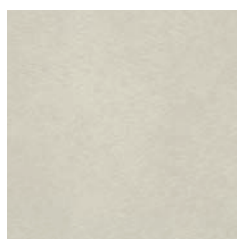
PROLINE DURA COLORS

ALL COLORS AVAILABLE IN THESE THREE PRODUCTS:

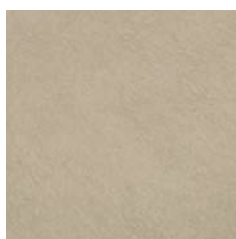
COLOR HARDENER (CH) // ANTIQUE RELEASE (AR) // EZ-TIQUE (TQ)



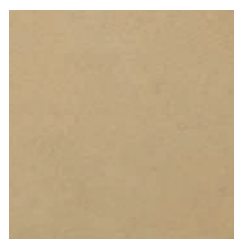
OCEANSIDE
612



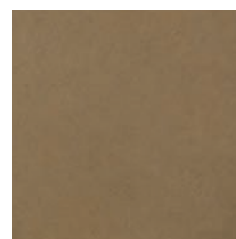
NAVAJO
606



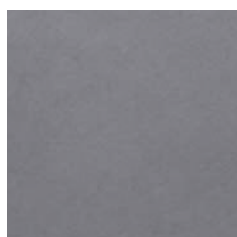
SUEDE
608



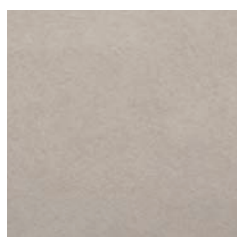
ESPRESSO
622



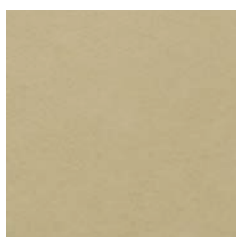
MOJAVE
605



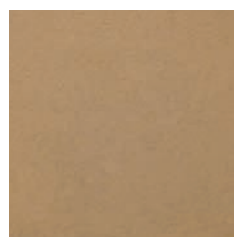
SOFT GRAY
613



SAGE
607



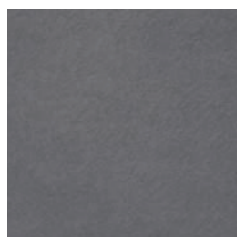
SAND CANYON
603



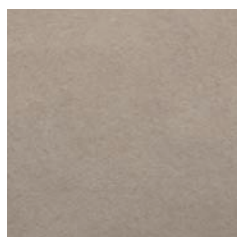
EL PASO
625



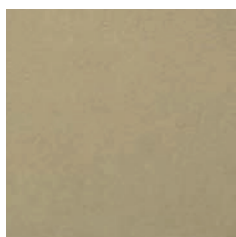
MOCHA
610



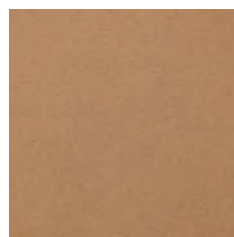
ROCK GRAY
614



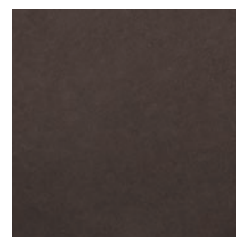
ASHEVILLE SLATE
647



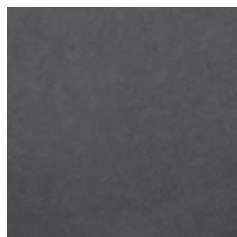
SYCAMORE
604



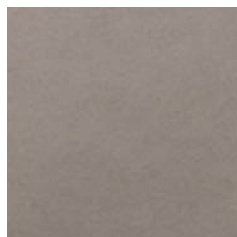
PECAN
643



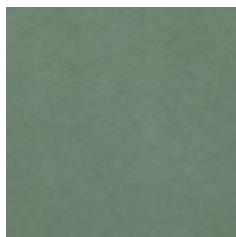
WALNUT
641



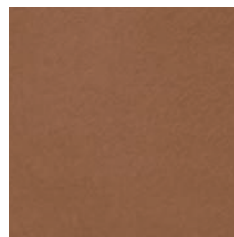
MIDNIGHT GRAY
615



SANTA FE
609



JADE
618



TERRA COTTA
629



JAVA
635

With over 40 standard designer colors, Proline's DURA COLOR HARDENER, DURA COLOR ANTIQUE RELEASE and EZ-TIQUE will give you the beautiful results you're looking for. With the addition of Proline's high quality life-like texturing tools and accessories, you are sure to create the most realistic floors and hardscapes imaginable.



ADOBE BEIGE
602



CREAM BUFF
601



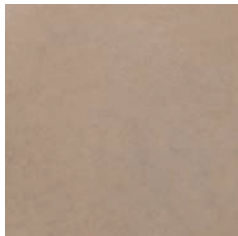
ARIZONA BUFF
623



COCONUT CREME
621



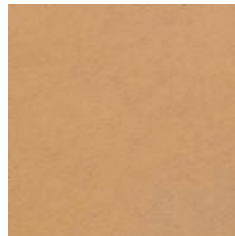
MISSION BEIGE
631



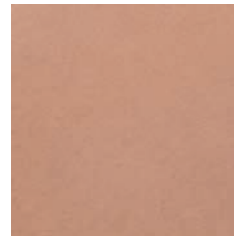
BEIGE CREME
650



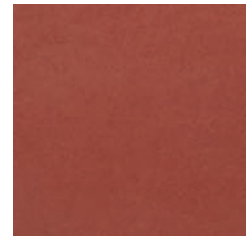
SUMMER SAND
645



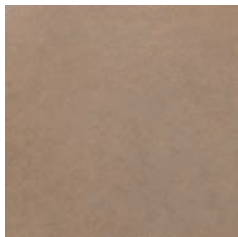
LIGHT COPPER
642



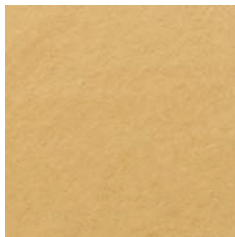
CHEYENNE
624



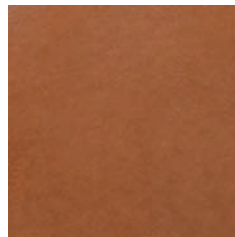
KILN RED
637



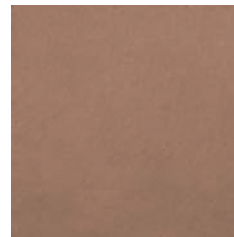
SADDLE SOAP
632



AVALON
646



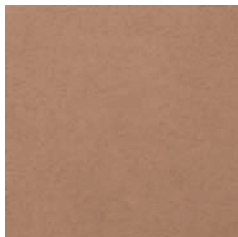
GEORGIA CLAY
628



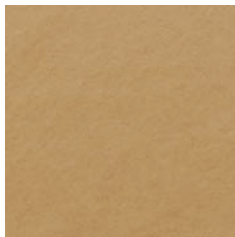
ROSEWOOD
633



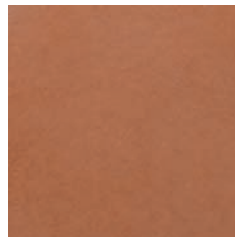
RED BRICK
640



BONSALL BEIGE
627



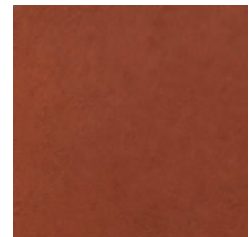
BUCKWHEAT
644



SALTILLO TILE
649



PUEBLO
630



TILE RED
638

*Also available in WHITE (800) and BLACK (700)

The colors shown are approximate, and as close as possible, to represent concrete with flat trowel finish and sealed with Dura Seal HG Sealer. Proline Dura Products is not responsible for application methods, finishing techniques, job site conditions, curing methods, and other conditions and therefore cannot guarantee an exact match. Various texturing and finishing techniques such as troweling or brooming, the use of sealers, and color variations in raw materials can produce variations in colors. Proline Dura Products highly recommends a representative job sample be done for each product.